

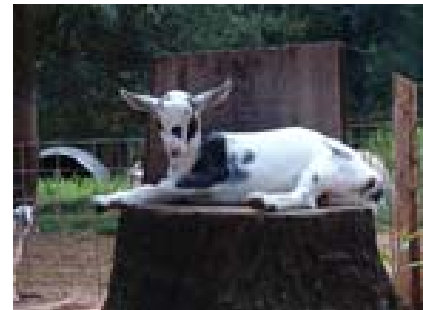


# SPRING MEANS BABIES AT SPLIT CREEK FARM, LLC

**Saturday, May 8, 2010  
11:00 AM - 5:00 PM**

**Split Creek Farm Grade A Goat Dairy is nationally known for its goat herd and the artisan cheeses and other quality goat milk products produced at the farm. The survival of America's small farms is dependent on educating the public about rural life and the origin of their foods. Come join us for the day, and learn how one such farm operates.**

**Tours and demonstrations will be on going throughout the day. Learn about the different breeds of goats, tour the milking parlor, and visit with the farm animals. . Presentations on the farm's working dogs.**



**Spend time in the  
"Kids Meeting Kids"  
pen with the baby  
goats**



**Admission - Adults \$5.00 Children 12 and under \$2.00  
Part of admission fee will go to support  
Anderson Interfaith Ministries Food Pantry**



Parking is in a pasture, with a short walk to the barn.  
For your pet's safety, please leave them at home.

**Our goat milk products are available for sampling all day. Food for purchase offered by Anderson's own *Friends Food With A Flair*.**

Directions - from I-85 - Take Exit 14 (Hwy 187). Turn north toward Clemson Research Park, 2.7 miles. Turn right at the Mobile Gas station. Go ¼ mile on Centerville Road. Farm is on the left.

Directions - from Pendleton - On Hwy 76/28 traveling toward Anderson, turn right at traffic light at Milliken Plant onto Hwy 187 (Wild Hog Road). Go past Pendleton High School. Turn left at the Mobile gas station onto Centerville Road. Go ¼ mile. The farm is on the left.

Split Creek Farm, LLC  
3806 Centerville Road  
Anderson, SC 29625

info@splitcreek.com

864-287-3921

www.splitcreek.com

SUPPORT YOUR LOCAL FARMERS